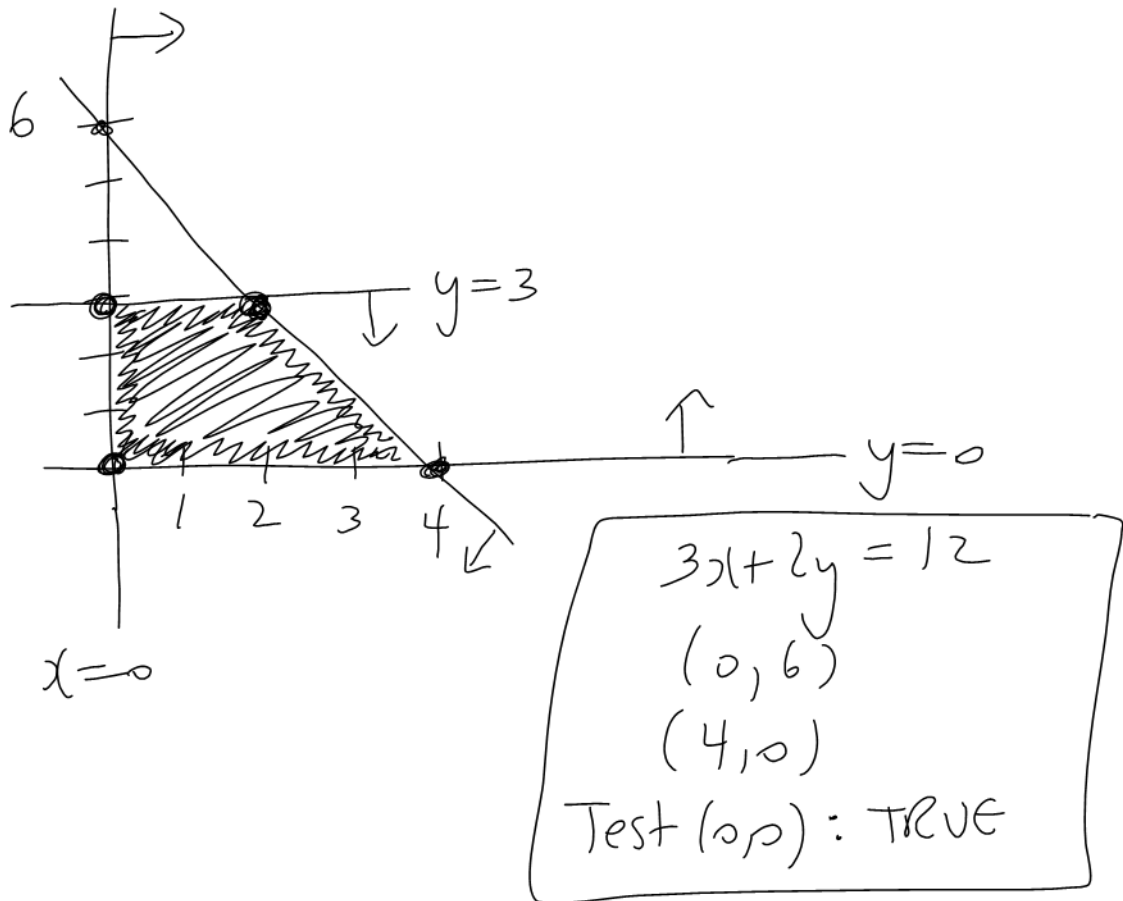


Name: \_\_\_\_\_

Graph the feasible set for the inequalities below. Using your graph, find all the vertices.

$$3x + 2y \leq 12, \quad y \leq 3, \quad x \geq 0 \text{ and } y \geq 0$$



Vertices

$$(0, 0)$$

$$(0, 3)$$

$$(4, 0)$$

$$(2, 3)$$

Use the graph  
or

$$\begin{aligned} y=3 \rightarrow 3x + 2y &= 12 \\ 3x + 6 &= 12 \\ 3x &= 6 \\ x &= 2 \end{aligned}$$